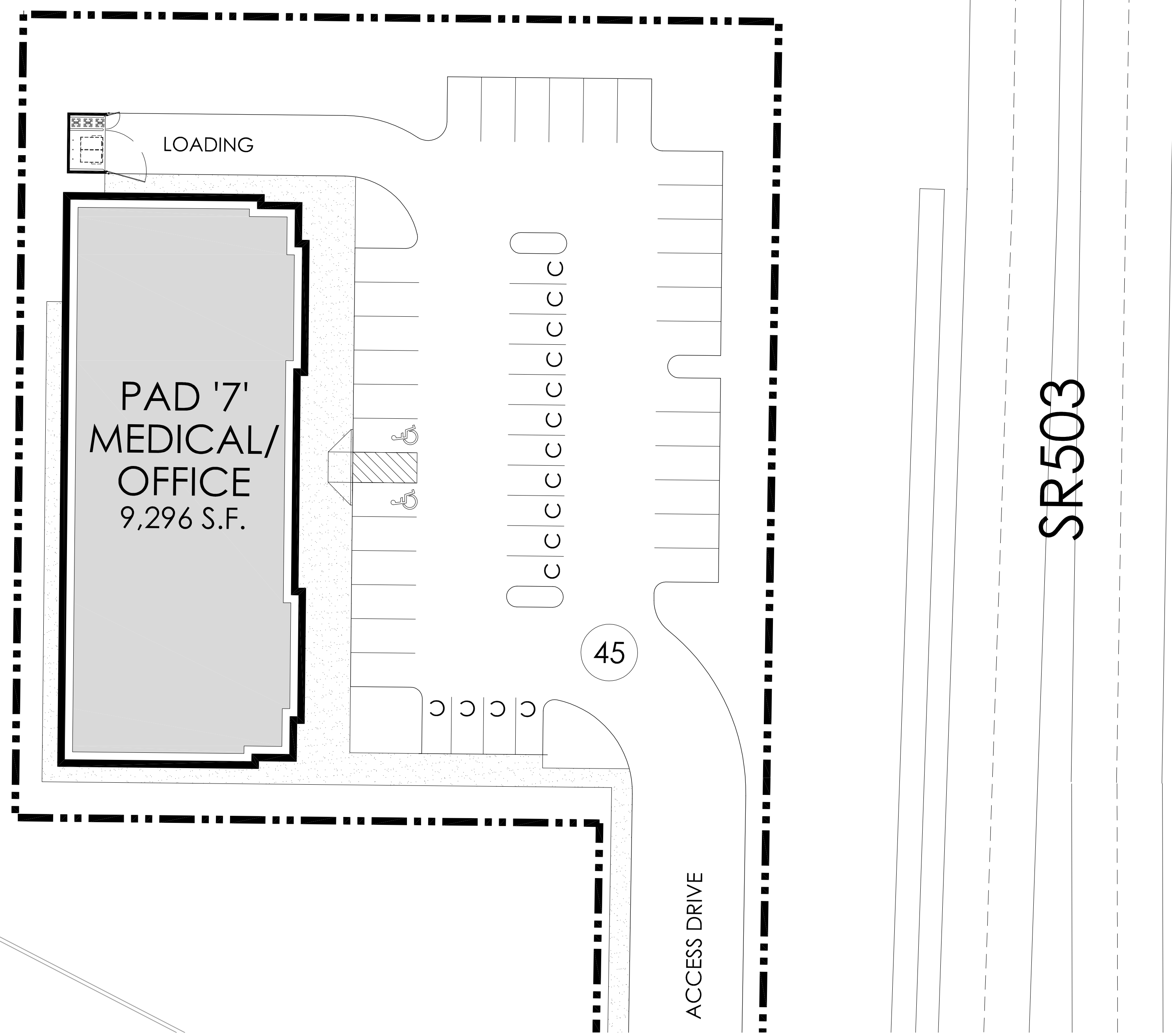


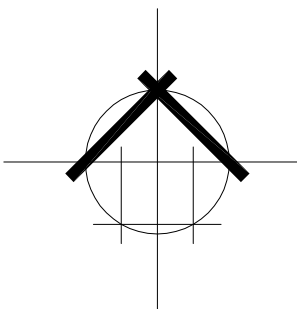
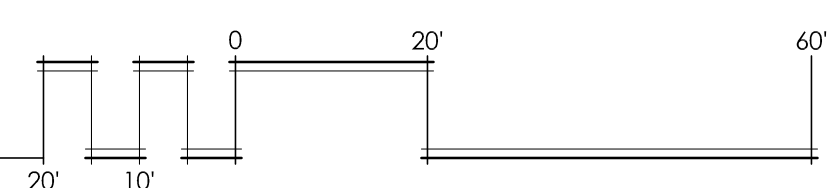
PAD '7' PARCEL
ASSESSOR #091055-154



SITE DATA - PAD '7' (ASSESSOR #091055-154)

SITE AREA :	59,215 S.F.	(1.36 ACRES)	SITE COVERAGE:	15.7%
BUILDING	PARKING REQUIREMENT		AREA	
PAD '7' MEDICAL/OFFICE :	(1/400)		9,296 S.F.	
TOTAL BUILDING AREA:			9,296 S.F.	
MINIMUM PARKING REQUIRED :			23 SPACES	
STANDARD PARKING PROVIDED:			28 SPACES	
COMPACT PARKING PROVIDED:	(33.3%)		15 SPACES	
HANDICAP PARKING PROVIDED:			2 SPACES	
TOTAL PARKING PROVIDED:			45 SPACES	
PARKING RATIO:	4.84		SPACES/1,000 S.F.	

1 SITE PLAN
SCALE: 1" = 20'-0"



Project Developed by Principal Properties, LLC.
www.principal-llc.com
For More Information, Please Contact T.J. Fontenette
360.834.1060
tj@principal-llc.com



April 18, 2013

BENNER STANGE ASSOCIATES, INC.
ARCHITECTS, INC.
5200 S.W. MEADOWS RD.
SUITE B-130
LAKE OSWEGO, OR 97035
(503) 670-0234
FAX (503) 670-0235
bsa@bsaarch.com



PAD '7' PARCEL
ASSESSOR #091055-154

SITE DATA - PAD '7' PARCEL (ASSESSOR #091055-154)

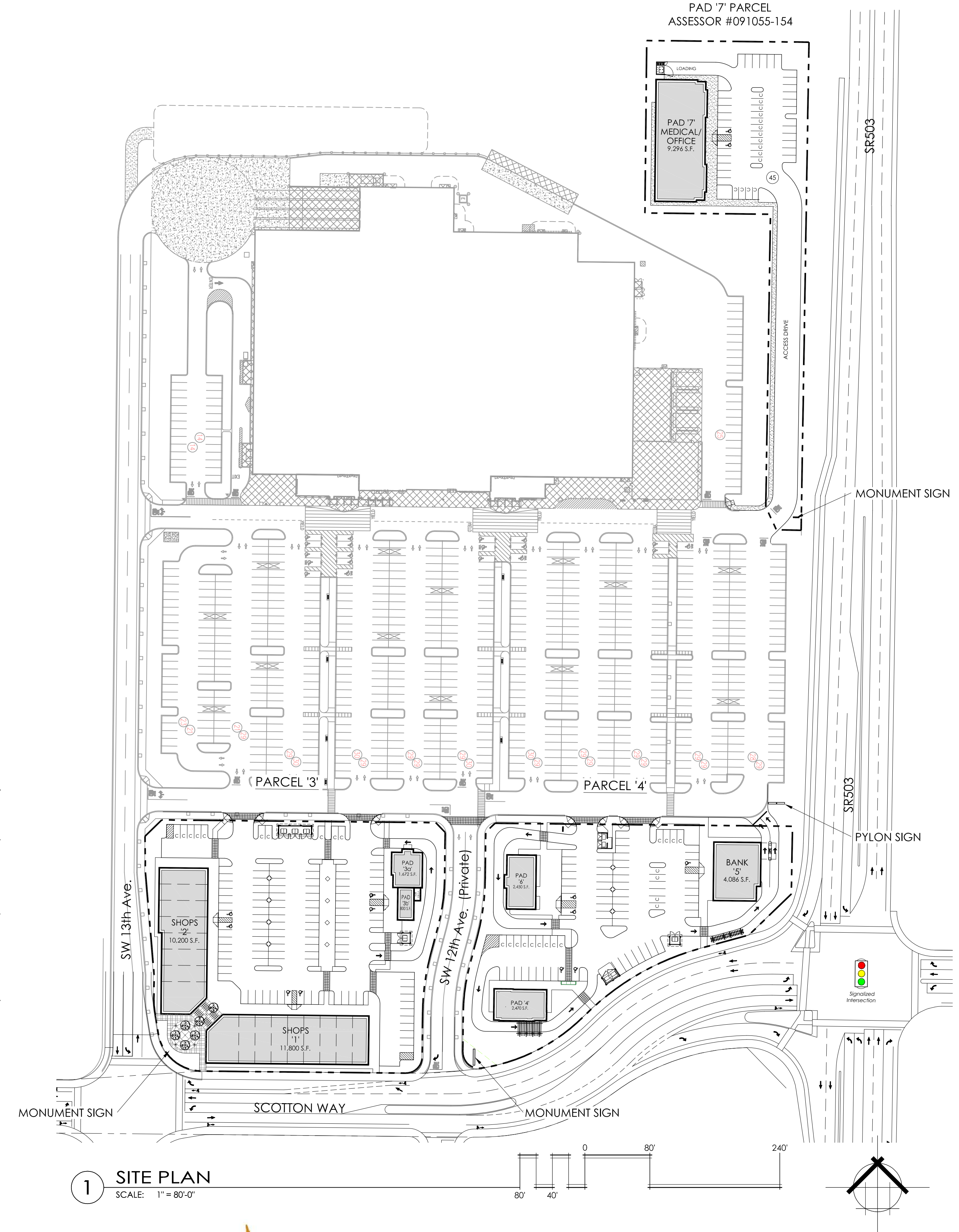
SITE AREA :	59,215 S.F. (1.36 ACRES)	SITE COVERAGE:	15.7%
BUILDING	PARKING REQUIREMENT	AREA	
PAD '7' MEDICAL/OFFICE :	(1/400)	9,296 S.F.	
TOTAL BUILDING AREA:		9,296 S.F.	
MINIMUM PARKING REQUIRED :		23 SPACES	
STANDARD PARKING PROVIDED:		28 SPACES	
COMPACT PARKING PROVIDED:		(33.3%)	15 SPACES
HANDICAP PARKING PROVIDED:		2 SPACES	
TOTAL PARKING PROVIDED:		45 SPACES	
PARKING RATIO:		4.84	SPACES/1,000 S.F.

SITE DATA - PARCEL '3'

SITE AREA :	104,353 S.F. (2.40 ACRES)	SITE COVERAGE:	23.5%
BUILDING	PARKING REQUIREMENT	AREA	
SHOPS '1' :	(1/250)	11,800 S.F.	
SHOPS '2' :	(1/250)	10,200 S.F.	
PAD '3a' :	(1/200)<2,000 S.F.+ (1/300)>2,000 S.F.	1,672 S.F.	
PAD '3b' :	(1/250)	800 S.F.	
TOTAL BUILDING AREA:		24,472 S.F.	
MINIMUM PARKING REQUIRED :		97 SPACES	
STANDARD PARKING PROVIDED:		98 SPACES	
COMPACT PARKING PROVIDED:		(8.8%)	10 SPACES
HANDICAP PARKING PROVIDED:		6 SPACES	
TOTAL PARKING PROVIDED:		114 SPACES	
PARKING RATIO:		4.66	SPACES/1,000 S.F.

SITE DATA - PARCEL '4'

SITE AREA :	78,467 S.F. (1.80 ACRES)	SITE COVERAGE:	11.5%
BUILDING	PARCEL AREA	PARKING REQUIREMENT	AREA
PAD '4' :	27,385 S.F.	(1/200)<2,000 S.F.+ (1/300)>2,000 S.F.	2,470 S.F.
BANK '5' :	26,875 S.F.	(1/400)	4,086 S.F.
PAD '6' :	24,207 S.F.	(1/200)<2,000 S.F.+ (1/300)>2,000 S.F.	2,450 S.F.
TOTAL BUILDING AREA:		9,006 S.F.	
MINIMUM PARKING REQUIRED :		22 SPACES	
STANDARD PARKING PROVIDED:		54 SPACES	
COMPACT PARKING PROVIDED:		(22.4%)	17 SPACES
HANDICAP PARKING PROVIDED:		5 SPACES	
TOTAL PARKING PROVIDED:		76 SPACES	
PARKING RATIO:		8.44	SPACES/1,000 S.F.



1 SITE PLAN
SCALE: 1" = 80'-0"

Project Developed by Principal Properties, LLC.
www.principal-llc.com
For More Information, Please Contact T.J. Fontenette
360.834.1060
tj@principal-llc.com



April 18, 2013

BENNER STANGE ASSOCIATES ARCHITECTS, INC.
5200 S.W. MEADOWS RD. SUITE B-130 LAKE OSWEGO, OR 97035
(503) 670-0234 FAX (503) 670-0235 bsa@bsaarch.com